



**GIRLS ACADEMIC LEADERSHIP ACADEMY: DR. MICHELLE KING SCHOOL FOR STEM**  
 1067 West Boulevard, Los Angeles, CA 90019 · (323) 900-4532 · www.GALAcademy.org

**PRINCIPAL & FOUNDER**

Dr. Liz Hicks

**ASSISTANT PRINCIPAL**

Jason Benoit

**COLLEGE COUNSELOR**

Tiffany Hervey

**HIGH SCHOOL COUNSELOR**

Tara Hallinan

**MIDDLE SCHOOL COUNSELOR**

Rebecca Gross

**BSAP COUNSELOR**

Elizabeth Huff

**ACCREDITATION**

Western Association of Schools and Colleges (WASC) - 6 years

**RECOGNITIONS**

- Educational Results Partnership Honor Roll: High Achieving School
- CA Senate, CA Assembly, LA City Council, LA Mayor's Office

**AWARDS**

- College Board AP Computer Science Female Diversity Award, 6 years
- MATE Underwater Roving Competition City (1st & 3rd)
- MS Robotics, Lego Team City
- HS Robotics, First Tech Challenge Regional Award
- MS Pentathlon
- Gold Level National Math Club
- Mock Trial State Competitors
- National Merit Scholars
- Questbridge & Posse Scholars
- NCWIT Student/Teacher Awards
- SAMPE STEM Teacher Award
- CIF City Champs: Volleyball, Soccer, Tennis
- CIF Sports Scholar Athletes

**MEMBERSHIPS**

- International Coalition of Girls' Schools
- Student Leadership Network

**FACULTY**

- 36 fully-credentialed teachers
- The majority of GALA teachers hold advanced degrees.

**FACILITIES (2023-2024)**

Architecture Studio	Maker Space
Cafeteria	Robotics Room
College Center	Track
Dance Studio	Theater
GALA Field	Wellness Room
Library Lounge	

**TUITION**

GALA is a public school, tuition-free and donation dependent. No student is admitted or denied based on financial capacity.

# 2023-2024 GALA SCHOOL PROFILE

**DESCRIPTION:** Girls Academic Leadership Academy (GALA): Dr. Michelle King School for STEM is the first and only PUBLIC all-girls STEM school in LAUSD and California. GALA serves 6th-12th grades. Established in 2016, GALA is a leader in student achievement where girls have the opportunity to excel in academics with a focus on STEM, leadership, and social-emotional skills. Our pillars are excellence, leadership, wellness, and honor. We welcome all girls who are committed to a rigorous college-prep curriculum. GALA is a Title 1 school with **100% graduation**.

**ADMISSIONS:** GALA is an LAUSD Admission Criteria public school. GALA is not a charter and not a magnet. New student admission is by application on the GALA website October 1-November 17.

**6th Grade:** 105 new students admitted      **9th Grade:** 0-20 new students admitted  
**7th Grade:** 0-10 new students admitted      **10th Grade:** 0-10 new students admitted  
**8th Grade:** 0-10 new students admitted      **11th Grade:** 0-10 new students admitted

**SCHOOL SCHEDULE:**

**Hours:** Mondays 10:00am-3:35pm, Tuesdays-Fridays 8:30am-3:35pm

**Academic Schedule:** Academics are organized on an alternating block schedule. Students have an Advisory period each morning followed by three 90-minute block classes daily. A-day is periods 1, 3, 5. B-day is periods 2, 4, 6. 7th period is a required elective Tuesdays-Fridays for 1 hour.

**7th Period Elective Schedule:** Tuesday-Friday 2:35-3:35pm

**REMOTE LEARNING GRADING POLICY**

In response to the COVID-19 crisis, LAUSD and GALA moved to remote learning March 2020, Hybrid in March 2021, and in-person August 2021. Grading policy here: <https://achieve.lausd.net/ab104>

**2023-2024 ENROLLMENT**

Total (6th-12th): 735  
 Middle School: 366  
 High School: 369  
 Class of 2024: 89

**2023-2024 ETHNICITY**

29% Caucasian  
 28% Latinx  
 14% African American  
 10% Asian  
 3% Filipino, Pacific Islander  
 1% Amer. Indian/Alaskan  
 15% 2 or more ethnicities

**DEMOGRAPHICS**

Families are coming from 81 Zip Codes  
 New students coming from 84 different schools  
 GALA is a Title 1 school.

**HIGH SCHOOL GRADUATION REQUIREMENTS**

In 2016, LAUSD aligned their graduation requirements with the A-G University of California minimum subject requirements. GALA requires girls to complete STEM courses above these requirements so our students are best prepared for the rigor of college courses. GALA requires 2 years of Computer Science in high school, a graduation requirement unique to any other LAUSD school.

A-G	UC / HIGH SCHOOL GRADUATION REQUIREMENTS	UC/HS REQ. # OF YEARS	GALA HIGH SCHOOL GRADUATION REQUIREMENTS	GALA REQ. # OF YEARS
A	Social Science	3	<b>Social Science</b>	<b>3</b>
B	English	4	<b>English</b>	<b>4</b>
C	Mathematics	3	<b>Mathematics</b>	<b>4</b>
D	Science	2 (1 physical 1 biological)	<b>Science</b>	<b>4</b>
E	Language Other Than English	2	<b>Language Other Than English</b>	<b>2</b>
F	Visual/Performing Art	1	<b>Visual/Performing Art</b>	<b>1</b>
G	College Prep Elective	1	<b>College Prep Elective</b>	<b>1</b>
	<u>LAUSD EXTRA REQ.</u> Physical Education Health (1 semester) Ethnic Studies (1 semester) Computer Science Advisory	2 1 1 0 0	<u>GALA EXTRA REQ.</u> <b>Physical Education</b> <b>Health (1 semester)</b> <b>Ethnic Studies (1 semester)</b> <b>Computer Science</b> <b>Advisory</b>	2 1 1 2 4



## 6TH GRADE COURSE MAP

**ENGLISH:** CC English 6  
**HISTORY:** World History: Anc. Civ.  
**MATH:** CC Math 6  
**SCIENCE:** Integrated Science 6  
**PHYSICAL EDUCATION**  
**ELECTIVE WHEEL:** Aerospace, Computer Science, Creative Writing, Ethnic Studies  
**7TH PERIOD ELECTIVE:** Aerospace, Art History, Dance, Ethnic Studies, Game Design, Graphic Arts, Journalism, Leadership, Math Lab, Robotics

## 7TH GRADE COURSE MAP

**ENGLISH:** CC English 7  
**HISTORY:** World History: Medieval Modern  
**MATH:** CC Math 7 or Accelerated CC Math 7/8  
**SCIENCE:** Integrated Science 7 and Health  
**PHYSICAL EDUCATION**  
**ELECTIVE -** Computer Science, Exploring Architecture and Engineering, or Music  
**7TH PERIOD ELECTIVE:** Aerospace, Exploring Architecture, Art History, Broadcast, Choir, Dance, Ethnic Studies, Game Design, Graphic Arts, Journalism, Leadership, Math Lab, Robotics, Spanish, Yearbook

## 8TH GRADE COURSE MAP

**ENGLISH:** CC English 8  
**HISTORY:** US History  
**MATH:** CC Math 8 or Algebra 1 (Prereq. accel. math)  
**SCIENCE:** Integrated Science 8  
**PHYSICAL EDUCATION**  
**ELECTIVE -** Computer Science, Exploring Architecture and Engineering, Musical Theater, or Spanish.  
**7TH PERIOD ELECTIVE:** Aerospace, Exp. Architecture, Art History, Broadcast, Choir, Dance, Ethnic Studies, Game Design, Graphic Arts, Journalism, Leadership, Math Lab, Robotics, Spanish, Yearbook.

## HIGH SCHOOL COURSES

### HISTORY (A)

World History  
 US History  
 Econ & Government  
**AP World History**  
**AP US History**  
**AP US Government & Politics**

### ENGLISH (B)

English 9  
 English 10  
 American Lit/Cont.Comp.  
 Adv Comp/Women in Lit.  
**AP English Language & Composition**  
**AP English Literature**

### MATH (C)

Algebra 1  
 Geometry  
 Algebra 2  
 Pre-Calculus  
 Intro Data Science  
**AP Calculus AB**  
**AP Statistics**

### SCIENCE (D)

Biology  
 Chemistry  
 Physics  
**AP Biology**  
**AP Chemistry**  
**AP Physics 1**  
**AP Environmental Science**

### LANGUAGE (E)

Spanish 1  
 Spanish Speakers 1  
 Spanish 2  
 Spanish Speakers 2  
 Spanish 3  
 LACC: Other languages

### VISUAL/PERFORMING ART (F)

Architecture  
 Dance  
 Graphic Design  
 Music (Orchestra, Musical Theater, Choir)

### COMPUTER SCIENCE

Exploring Computer Science  
**AP Computer Principles (D)**  
**AP Computer Science A (Java) (C)**

### PHYSICAL EDUCATION

Advance PE 1  
 Advance PE 2  
 CIF Sports:  
 Basketball  
 Cheer  
 Cross Country  
 Flag Football (new)  
 Lacrosse  
 Soccer  
 Swim  
 Tennis  
 Track  
 Volleyball

### AP ELECTIVES

**AP African American Studies**  
**AP Research, AP Seminar**  
**AP Psychology**

### LAUSD REQUIREMENTS

Health (1 semester)  
 Ethnic Studies (1 semester)

### HIGH SCHOOL ELECTIVES

Architecture Design  
 Architecture Engineering Dyn.  
 Broadcast  
 Choir  
 Dance  
 Engineering  
 Graphic Design 1  
 Latin American Studies  
 Leadership  
 Marine Biology  
 Mock Trial  
 Musical Theater  
 Robotics  
 Speech  
 Virtual Branding & Design  
 Weight Lifting  
 Yearbook

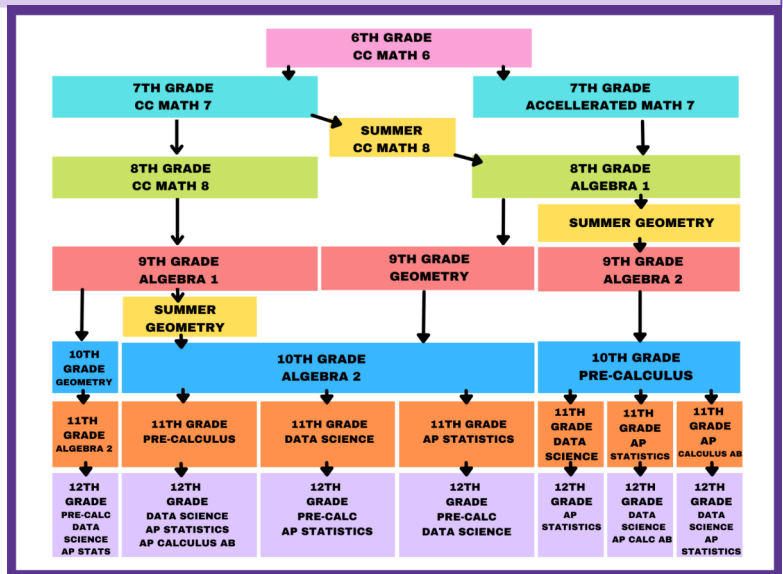
## GALA MATH FLOW CHART

Students can "accelerate" in math beginning in 7th grade. Acceleration is based on the student's willingness to do the academic rigor and teacher recommendation

The math chart illustrates the possible math trajectories at GALA.

**Course Handbook:** [www.galacademy.org/academics](http://www.galacademy.org/academics)

**Math Chart:** [www.galacademy.org/math](http://www.galacademy.org/math)





# MATRICULATION TO COLLEGE - CLASS OF 2023



The first three graduating classes at GALA (2020, 2021, 2022) attended GALA 9th-12th grades. The first graduating class of students attending full span, 6th-12th grades is the Class of 2023. 69 students in the Class of 2023 were accepted to colleges in 36 states, Washington D.C., and 6 countries. In the list of college acceptances below, every school denoted in bold has a Class of 2023 graduate attending. A parenthesis denotes multiple students attending.

Aberystwyth University  
**Agnes Scott College**  
 Alabama A & M University  
 Allegheny College  
 American University  
**Amherst College**  
**Amsterdam University**  
 Arizona State University  
 Azusa Pacific University  
**Bard College**  
**Barnard College**  
 Bates College  
 Boston University  
 Brandeis University  
 Brown University  
 Bryant University  
 Bryn Mawr College  
 Bucknell University  
 Butler University  
 Cal Lutheran  
 Cal Poly Humboldt  
 Cal Poly SLO  
 California Institute of Technology  
 Cal Poly-Pomona  
 Cal State Univ.-Bakersfield  
 Cal State University-Channel Isle  
 Cal State University-Chico  
**Cal State Univ.-Dominguez H. (2)**  
 Cal State University-Fresno  
 Cal State University-Fullerton  
 Cal State University-Long Beach  
**Cal State University-Los Angeles**  
 Cal State University-Monterey Bay  
**Cal State University-Northridge (5)**  
 Cal State University-Sacramento  
 Cal State University-San Bernardino  
 Cal State University-Stanislaus  
 Carnegie Mellon University  
 Case Western Reserve  
**Chapman University**  
 Claremont McKenna College  
**Clark Atlanta University**  
 Clemson University  
 Colorado Christian University  
**Columbia University - New York**  
 Cornell University  
 Cornish College of the Arts  
 DePaul University  
 Drexel University  
 Duquesne University  
 Elizabeth City State University  
 Emerson College

Fordham University  
**George Mason University**  
 Georgia State University  
 Gonzaga University  
 Grambling State University  
**Hampton University**  
 Harris-Stowe State University  
 Harvey Mudd College  
 Hawaii Pacific University  
 High Point University  
 Howard University  
**Hult International Business School**  
 Illinois Institute of Technology  
 Indiana University-Bloomington  
 Jackson State University  
 Kalamazoo College  
**Lehigh University**  
 Lewis & Clark College  
 Louisiana State University  
**Loyola Marymount University (2)**  
 Loyola University Chicago  
 Loyola University Maryland  
 Manhattan College  
 Marymount Manhattan College  
 Miami University, Oxford  
**Middlebury College**  
 Monash University  
 Montana State University  
**Mount Saint Mary's University (2)**  
 New Jersey Institute of Technology  
 New York Institute of Technology  
 North Carolina A & T State Univ  
**Northeastern University (1)**  
 Northern Arizona University  
 Northwestern University  
 Oberlin College  
 Occidental College  
 Oregon State University  
 Pace University, NYC  
 Pennsylvania State—Abington  
 Pepperdine University  
 Point Park University  
 Pratt Institute-Main  
**Purdue University-Main Campus**  
 Reed College  
 Regis University  
 Rensselaer Polytechnic Institute  
 Rochester Institute of Technology  
 Rutgers University-New Brunswick  
 Saint Mary's College of California  
 San Diego State University  
**San Francisco State University (2)**

San Jose State University  
 Santa Clara University  
 Sarah Lawrence College  
**Savannah College of Art & Design**  
 School of the Art Inst. of Chicago  
 Scripps College  
 Seattle University  
 Smith College  
 Sonoma State University  
 South Carolina State University  
 Southern University & A & M  
 Spelman College  
 St. Joseph's University - New York  
 Stony Brook University  
 SUNY at Purchase College  
 Syracuse University  
 Tennessee State University  
 Texas A & M Univ.-College Station  
 The George Washington University  
 The New School  
 The University of British Columbia  
 The University of Montana  
 Tulane University of Louisiana  
 Union College (NY)  
 University of Arizona  
**University of California-Berkeley (4)**  
**University of California-Davis**  
 University of California-Irvine  
**University of California-LA (4)**  
 University of California-Merced  
**University of California-Riverside (2)**  
 University of California-San Diego  
 University of California-St Barbara  
**University of California-St. Cruz (6)**  
 University of California, San Fran  
 University of Colorado Boulder  
 University of Connecticut  
 University of Delaware  
 University of Denver  
 University of Dundee  
 University of Houston  
 University of Illinois-Urbana-Champ.  
 University of Illinois Chicago  
 University of La Verne  
 University of Maryland E Shore  
 University of Mass-Amherst  
 University of Mass-Boston  
 University of Michigan-Ann Arbor  
 University of Nevada-Las Vegas  
 University of Nevada-Reno  
 University of New Mexico-Main  
 University of Oklahoma-Norman

**University of Oregon (2)**  
**University of Pennsylvania**  
 University of Pittsburgh-Pittsburgh  
 University of Portland  
 University of Rochester  
 University of San Diego  
 University of San Francisco  
**University of Southern California (4)**  
 University of Tulsa  
 University of Utah  
**University of Virginia-Main Campus**  
 University of Washington-Bothell  
**University of Washington**  
 University of Washington-Tacoma  
**University of Wisconsin-Madison**  
 Virginia State University  
 Virginia Tech  
 Virginia Wesleyan University  
**Washington University - St. Louis**  
 Wellesley College  
 Wentworth Institute of Technology  
 Western Washington University  
 Wheaton College - Massachusetts  
 Whitman College  
 Whittier College  
 Whitworth University  
 Winston-Salem State University  
 Woodbury University  
**Worcester Polytechnic Institute**  
 Xavier University of Louisiana

## GALA CLASSES OF 2020, 2021, AND 2022 WERE ALSO ACCEPTED TO THE FOLLOWING SCHOOLS:

Boston College  
 Dartmouth College  
 Duke University  
 Embry-Riddle Aeronautical Univ.  
 Georgetown  
 New School for Architecture  
 New York University  
 SoCal Institute of Architecture  
 Tufts University  
 Vassar College  
 Wellesley College  
 Wiley College

